



# Gyproc<sup>®</sup> Regular Board



# Gyproc® Regular Board

## Gyproc® Regular Board

### Application

For the use in conjunction with internal ceilings and walls

### Performance

- Quick and easy to install
- Health and environmentally friendly
- Improve sound insulation when applied in the system



## Technical Information

### Workability

- Lightweight
- Quick and easy installation

### Thermal Insulation

- Thermal resistance value (R) between 0.06-0.1 sq.m.K/W (depending on thickness)

### Aesthetic Properties

- Highly flexible in creating the highest standards of design
- Easily decorated with paint, tiles, wallpaper etc.



## Product Information

Gyproc® Regular Board

### Thickness

- 9 mm
- 12 mm
- 12.5 mm
- 15 mm
- 15.9 mm (5/8")

### Edge Type

- Recessed Edge (RE)
- Square Edge (SE)



### Nominal Size

- 1200 x 2400 mm
  - 1220 x 2440 mm
- other sizes are available, please contact Customer Service

### Production Standard

- ASTM C1396
- ISO 9002
- BS 476 Part 6 and 7
- BS EN 520
- ISO 14001
- CNS 6532,
- TIS 219-2552



# Gyproc® Regular Board

## Practical space saving family solutions for your home.

Gyproc® Regular Board is a standard gypsum board with ivory face paper, suitable for most applications where normal fire, structural and acoustic performance are specified.

Gyproc® Regular Board is non-combustible and has superior thermal insulation, is smooth and level, giving a beautiful appearance ideal for interior walls and ceilings.

Made from natural gypsum, Gyproc® Regular Board is produced leading edge technology with high quality and international standards recognition.



**SITE PRODUCTIVITY GAIN**



**ENVIRONMENTALLY FRIENDLY**



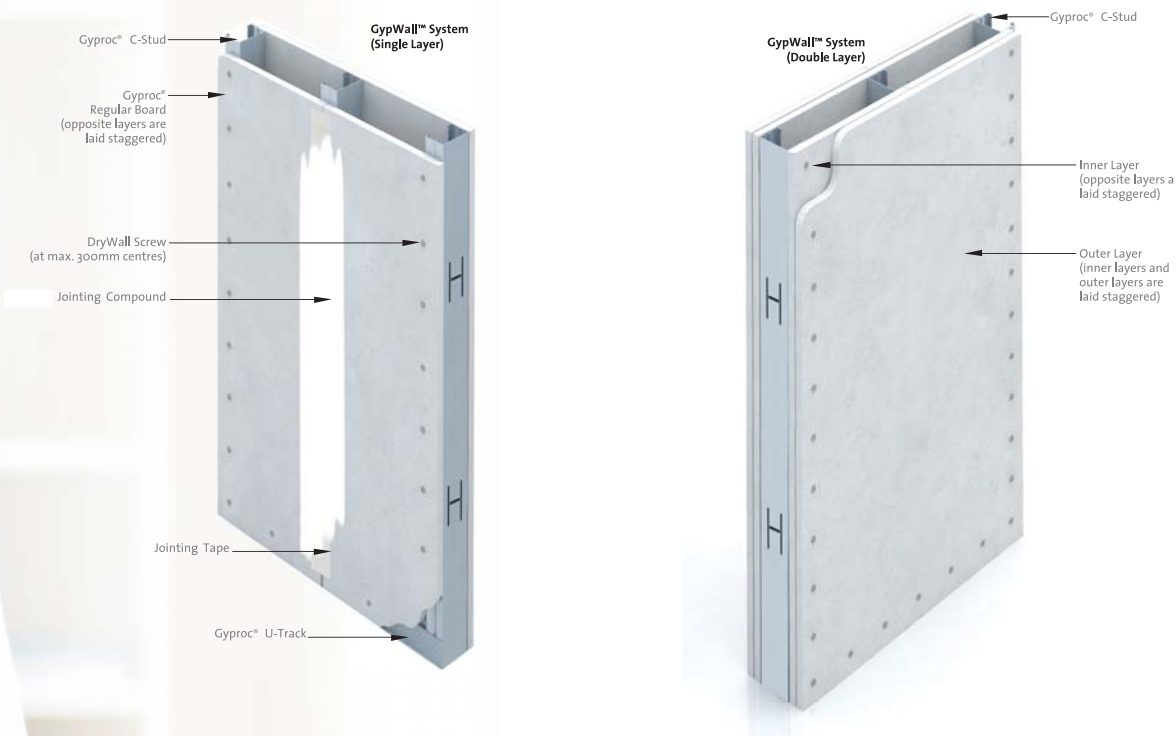
**INSPIRING SPACE**



# Gyproc® Regular Board

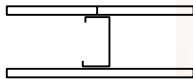
## GypWall™ System

GypWall™ System is drywall partition system which is lightweight, non-loadbearing and quickly assembled on site. It provides cost effective wall solutions suitable for all types of buildings.



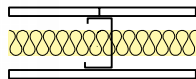
## 'C' Studs - single and double layer board linings

①



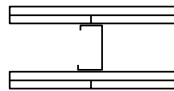
One layer of board each side of 'C' Studs at 610mm centres.

②



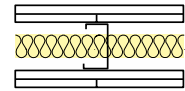
One layer of board each side of 'C' Studs at 610mm centres. ISOVER Acoustic Partition Roll in the cavity.

③



Two layers of board each side of 'C' Studs at 610mm centres.

④



Two layers of board each side of 'C' Studs at 610mm centres. ISOVER Acoustic Partition Roll in the cavity.

Detail	Partition thickness mm	Board type	Stud width mm	Lining thickness mm	Sound insulation $R_w$ dB/STC	Duty rating	Approx. weight kg/m <sup>2</sup>
<b>30 minutes fire resistance (BS)</b>							
①	75	Gyproc Regular	50	1 x 12.5	34	Medium	18
②	75	Gyproc Regular	50	1 x 12.5	40	Medium	18
②	96	Gyproc Regular	64	1 x 16	46	Medium	22
<b>60 minutes fire resistance (BS)</b>							
③	100	Gyproc Regular	50	2 x 12.5	42	Severe	35
④	100	Gyproc Regular	50	2 x 12.5	51	Severe	35
④	120	Gyproc Regular (inner) + Gyproc Habito (outer)	70	1 x 12.5 + 1 x 12.5	54	Severe	42

**(NB)** The fire resistance and sound insulation performances are for imperforate partitions incorporating boards with all joints taped and filled according to Thai Gypsum's recommendations. Any variation in the specifications should be checked with the local authorized distributor.